

2018 Storm Drain Marking Event

On February 20, 2018, Whitfield County 4-H students and their advisors participated in the annual Whitfield County Storm Drain Marking Project. The storm drain stenciling/marketing project is an annual outreach to improve stormwater awareness in the community. A total of seventeen students and two advisors participated in marking catch basins in several residential neighborhoods and Westside Park in Whitfield County. The subject marking area included Westside Park, Enclave Dr., Farm View Ct, Buckingham Way, Eden Park Dr., Leona Way and Turkey Trot Dr. A total of 40 drains were marked as indicated on the attached maps.

Volunteers also placed handbills/door hangers on mailboxes adjacent to marked stormwater drains that read, "Be a Part of the Solution to Stormwater Pollution."

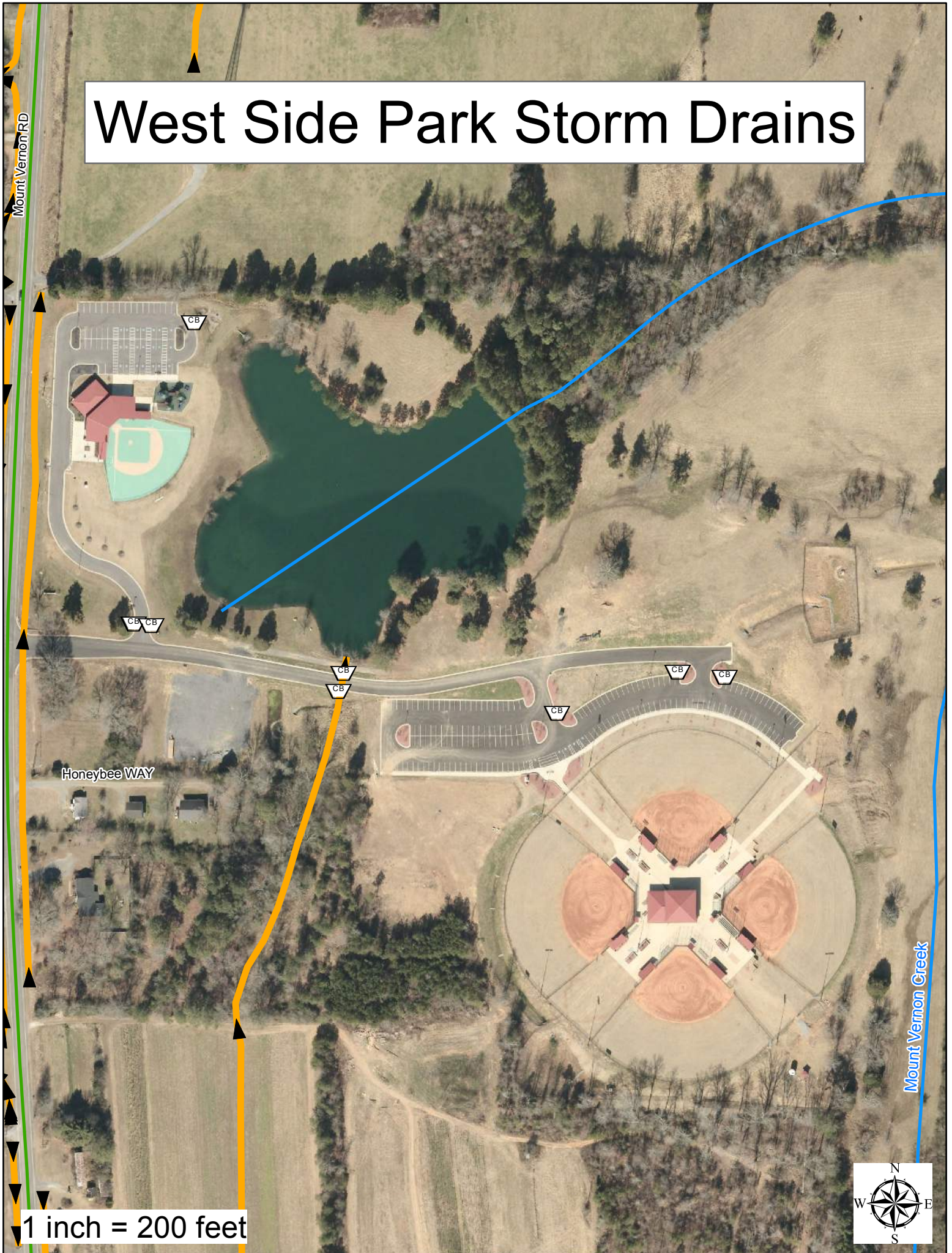
The more aware the average citizen is regarding stormwater and pollution, the less likely the citizen will intentionally pollute. The markers placed read, "Don't pollute flows to waterways."

If you would like to participate in a storm drain marking project or learn more about stormwater, please contact Chris Hester at (706) 876-2512 or [mailto:chester@whitfieldcountyga.com?subject=Storm Drain Marking](mailto:chester@whitfieldcountyga.com?subject=Storm%20Drain%20Marking).

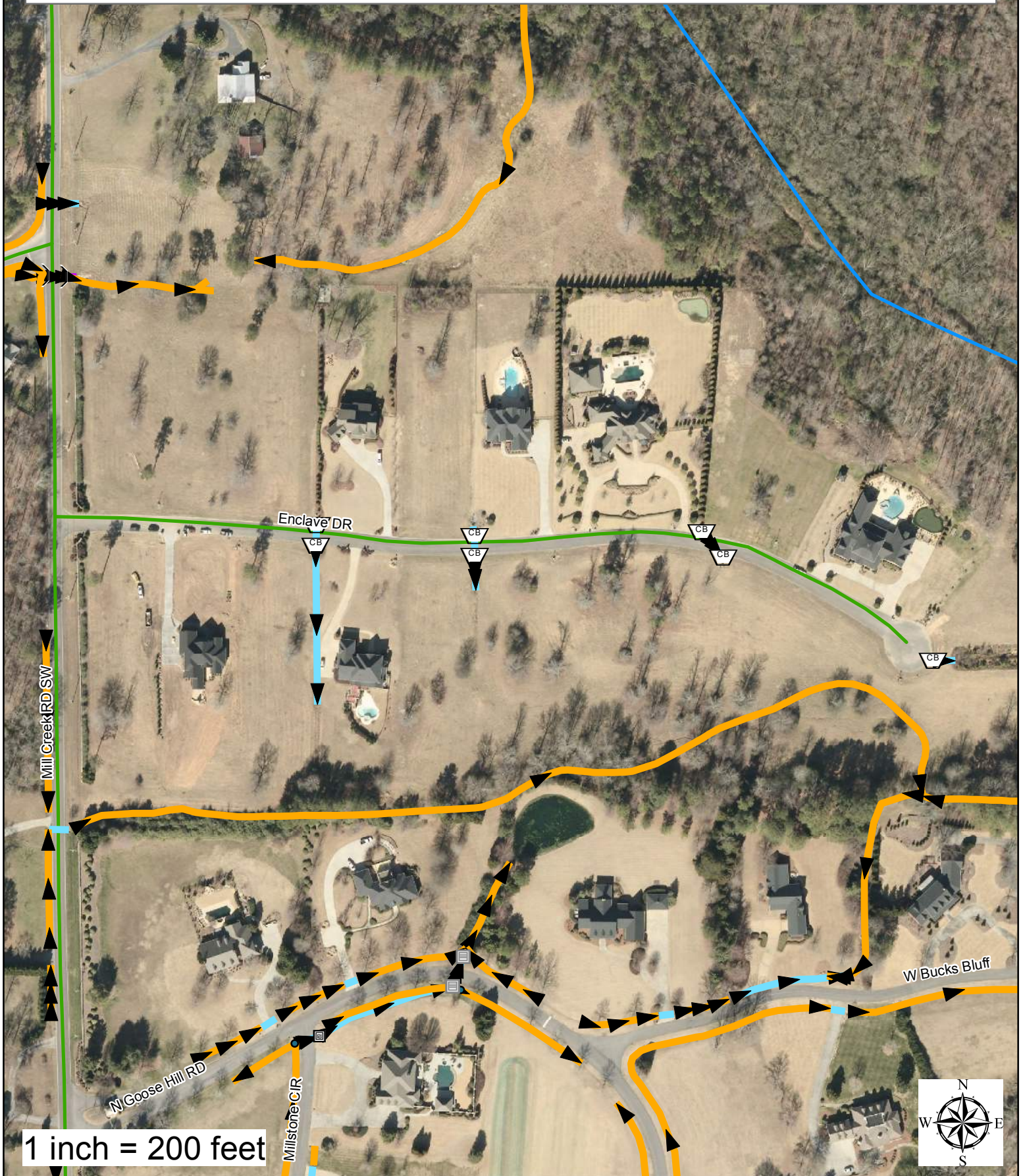
*All drop inlets and catch basins shown were marked.

Storm Drain Marker Area Maps are on the following pages.

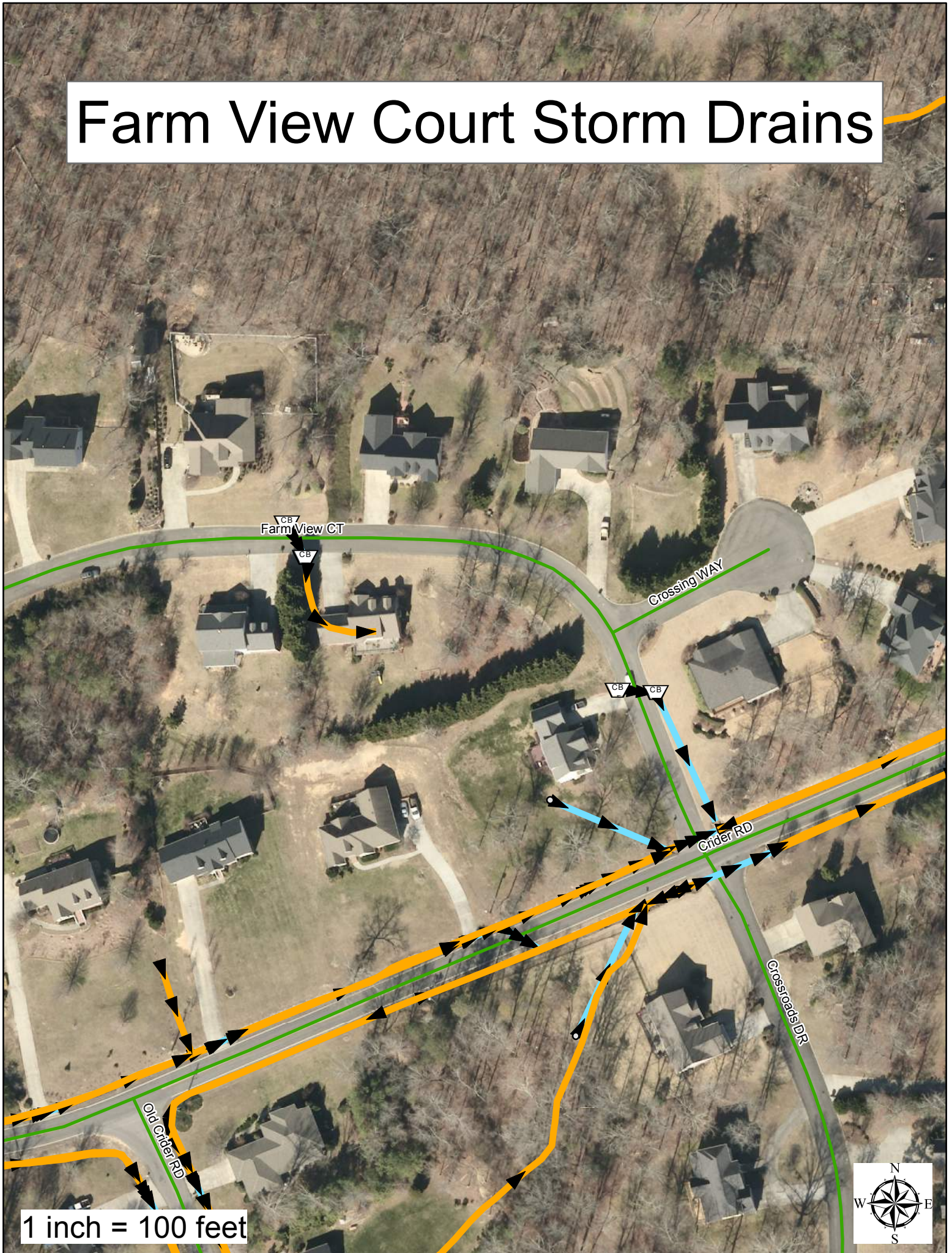
West Side Park Storm Drains



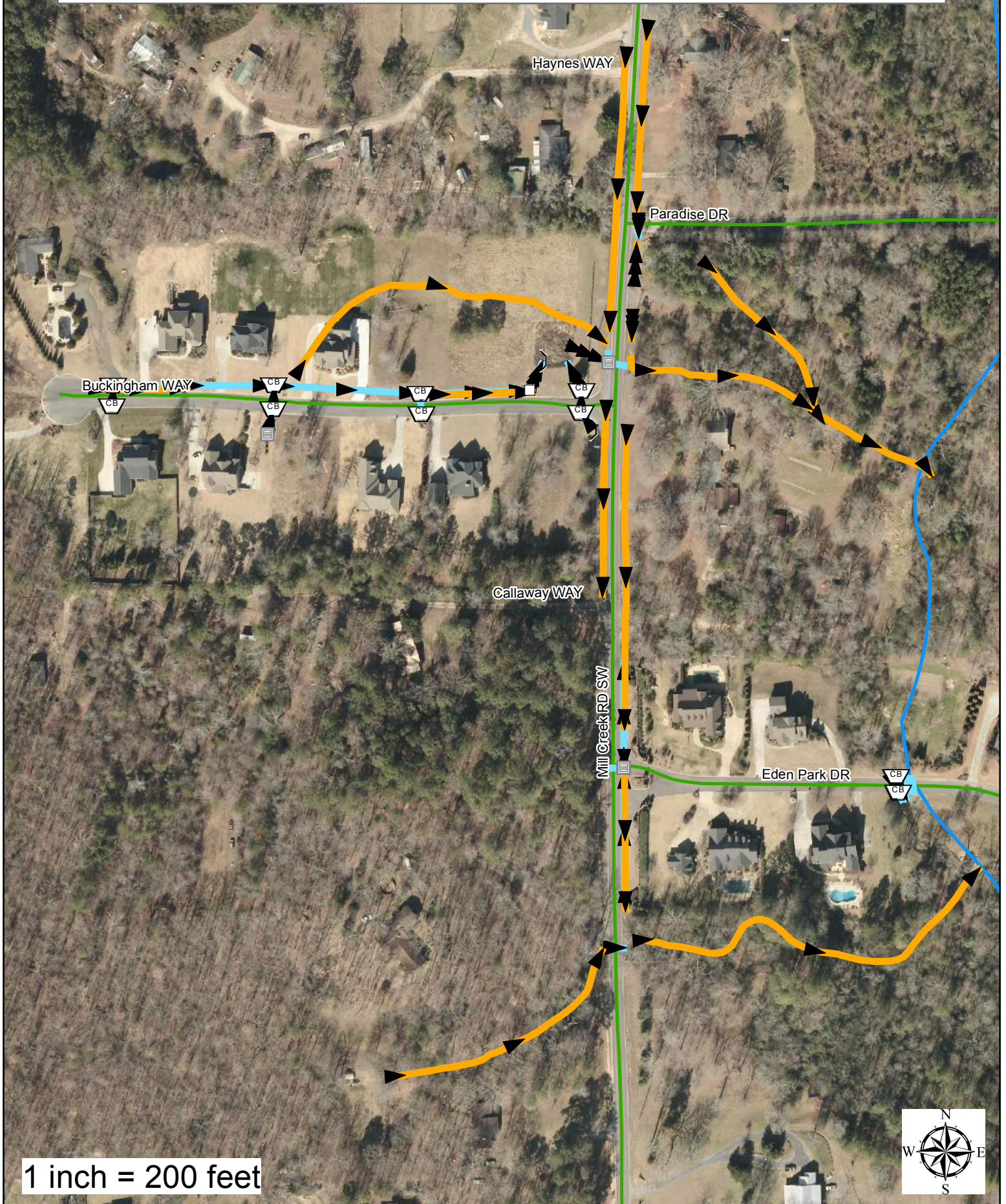
Enclave Subdivision Storm Drains



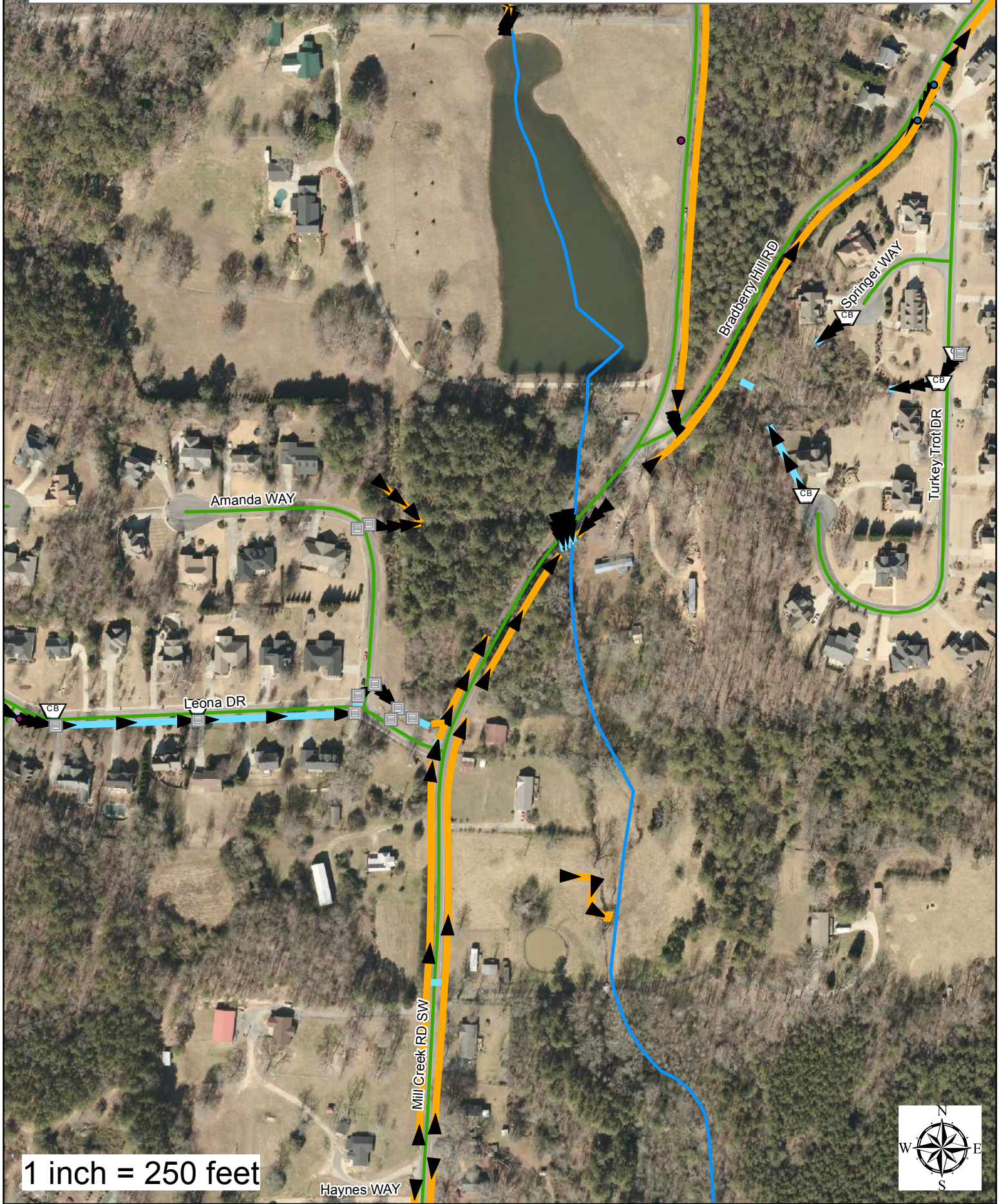
Farm View Court Storm Drains



Buckingham & Eden Park Storm Drains



Leona Way & Turkey Trot Dr Storm Drains



Centennial PKWY Storm Drains

